

THE LITHOSTRATIGRAPHIC UNITS OF THE AUSTRIAN STRATIGRAPHIC CHART  
2004 (SEDIMENTARY SUCCESSIONS)

WERNER E. PILLER [ED.]

# ABHANDLUNGEN

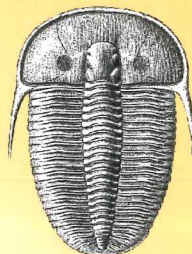
BAND 66  
2014

PERMIAN	LOPINGIAN
	GUADALUPIAN
	CISURALIAN
CARBONIFEROUS	PENNSYLVANIAN
	MISSISSIPPIAN
DEVONIAN	UPPER
	MIDDLE
	LOWER
SILURIAN	PRIDOLI
	LUDLOW
	WENLOCK
	LLANDOVERY
ORDOVICIAN	UPPER
	MIDDLE
	LOWER
CAMBRIAN	UPPER
	MIDDLE
	LOWER

## Vol. I THE PALEOZOIC ERA(THEM)

2<sup>nd</sup> EDITION

Authors:  
Bernhard Hubmann [Coordinator] (Graz),  
Fritz Ebner (Leoben), Annalisa Ferretti (Modena),  
Erika Kido (Graz), Karl Krainer (Innsbruck),  
Franz Neubauer (Salzburg),  
Hans Peter Schönlaub (Kötschach-Mauthen)  
& Thomas J. Suttner (Graz).



Geologische Bundesanstalt



## Contents

Introduction .....	7
The Paleozoic Era(them) .....	9
Grauwackenzone / Greywacke Zone .....	9
W-Grauwackenzone / Western Greywacke Zone (W-GWZ) .....	9
Siliciclastic facies (partim Glemmtal Unit in the Kitzbüheler Alpen) .....	9
Carbonate facies (partim Wildseeloder unit in the Kitzbüheler Alpen) .....	12
E-Grauwackenzone / Eastern Greywacke Zone (E-GWZ) .....	16
Noric Nappe .....	16
Veitsch Nappe .....	27
Gurktaler Deckensystem / Gurktal Nappe System .....	29
Grazer Paläozoikum / Graz Paleozoic .....	41
Remschnigg/Sausal / Remschnigg and Sausal areas .....	56
Südburgenland / Southern Burgenland .....	60
Karnische Alpen / Carnic Alps .....	61
Pre-Variscan Sequence .....	61
Post-Variscan Sequence .....	82
Karawanken / Karavanke Mountains .....	90
Pre-Variscan Sequence .....	90
Post-Variscan Sequence .....	96
Karbon von Nötsch / Carboniferous of Nötsch .....	97
Drauzug / Drau Range .....	99
Nördliche Kalkalpen / Northern Calcareous Alps .....	100
Jungpaläozoikum von Zöbing / Lower Paleozoic of Zöbing .....	103
References .....	105
Index: Lithostratigraphische Einheiten / Lithostratigraphic Units .....	127
Index: Synonyme / Synonyms .....	129
Appendices .....	134

Supplement: Austrian Stratigraphic Chart 2004 – Paleozoic